

**TOTAL ACCOMMODATION SCHEDULE**

	1 BED	2 BED	3 BED	4 BED	TOTAL	NO. FLOORS
<b>TYPE A</b>	<b>TYPE 3</b>	<b>TYPE 1</b>	<b>TYPE 2/TYPE 7</b>	<b>TYPE 4</b>		
	[71M <sup>2</sup> ]	[89M <sup>2</sup> ]	[104M <sup>2</sup> ]	[143M <sup>2</sup> ]		
BLOCK 1	2	22	24 / 0	4	52	7 [POD+5+PENT]
BLOCK 2	2	22	24 / 0	4	52	7 [POD+5+PENT]
BLOCK 3	2	30	32 / 0	4	68	9 [POD+7+PENT]
BLOCK 4	2	34	36 / 0	4	76	10 [POD+8+PENT]
BLOCK 5	1	38	39 / 1	4	83	11 [POD+9+PENT]
<b>TYPE B</b>	<b>TYPE 5/6</b>					
	[60M <sup>2</sup> ]					
BLOCK	33 / 36	0	0	0	69	9 [POD+8]
<b>TOTAL</b>	<b>71</b>	<b>142</b>	<b>152</b>	<b>20</b>	<b>400</b>	

TOTAL APPROX. 431 CARS (OF WHICH 24 ARE FOR ACCESS USERS)

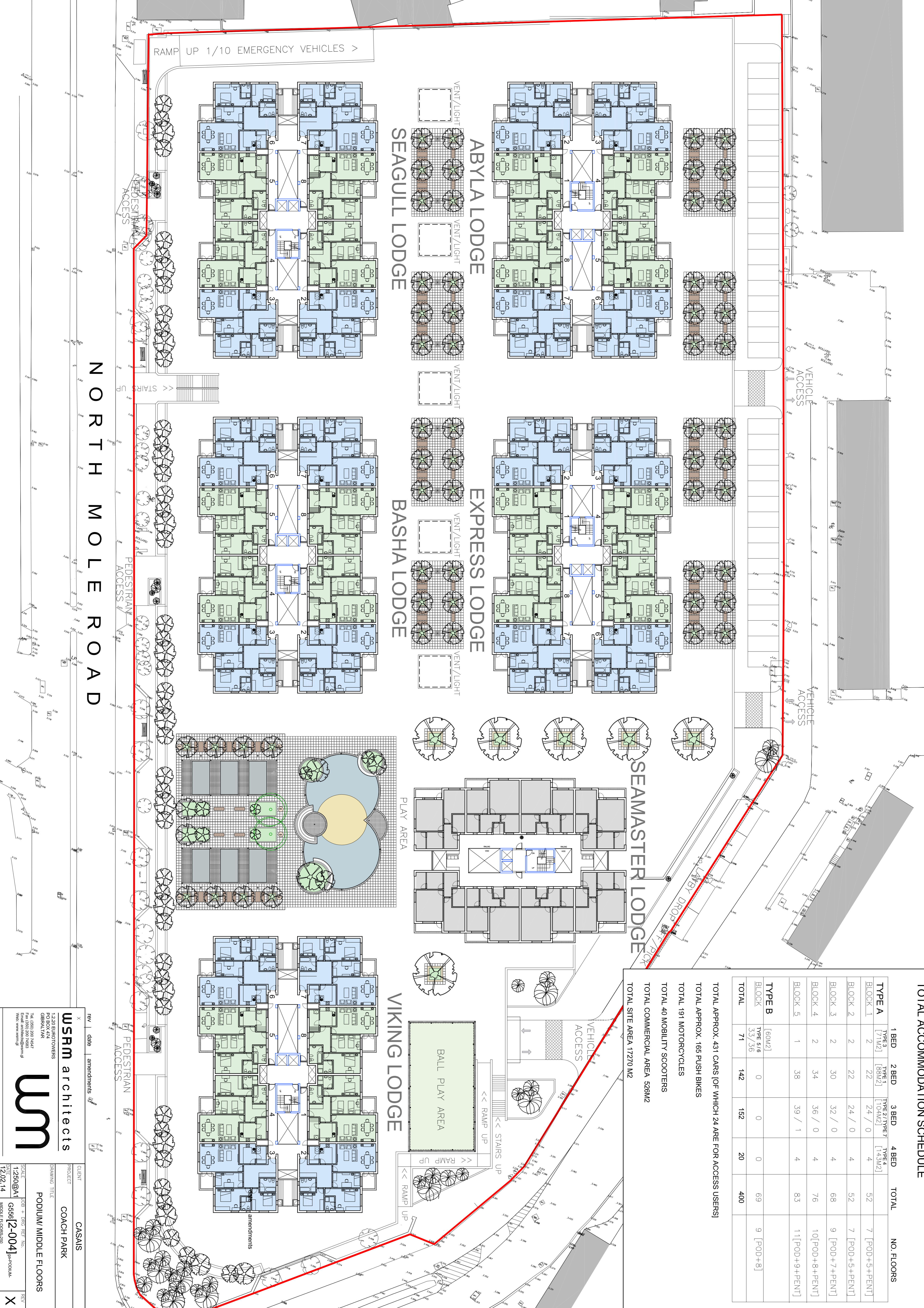
TOTAL APPROX. 165 PUSH BIKES

TOTAL 191 MOTORCYCLES

TOTAL 40 MOBILITY SCOOTERS

TOTAL COMMERCIAL AREA 528M<sup>2</sup>

TOTAL SITE AREA 17270 M<sup>2</sup>



rev | date | amendments  
**USRM architects**  
 1220 BURBOWERS  
 7125 COACH PARK  
 GIBBERLAIN  
 TEL: (0800) 200 7442  
 Email: usrm@usrm.com.au  
 WWW: www.usrm.com.au

CLIENT: CASAS  
 PROJECT: COACH PARK  
 DRAWING TITLE: PODIUM/ MIDDLE FLOORS  
 SCALE: 1:250 @ A1  
 DATE: 12.02.14  
 JOB + DWG REF. NO.: G556 [2-004]  
 MIDDLE FLOORS-20

**wm**  
 REV X